



Pilgrims Way,  
Maidstone ME14 3EX  
£2,500 Per Month

COLES  
TOWN & COUNTRY  
VALUERS • LETTINGS & ESTATE AGENTS



Nestled in the charming village of Detling, Maidstone, this well-presented five-bedroom detached property offers a perfect blend of modern living and spacious comfort. Recently decorated, the home boasts a fresh and inviting atmosphere, making it an ideal choice for families or those seeking ample space.

Upon entering, you will be greeted by a generous layout that includes four reception rooms, providing versatile spaces for relaxation, entertainment, or even a home office. The heart of the home is undoubtedly the master bedroom, which features an ensuite bathroom, ensuring privacy and convenience for the homeowners.

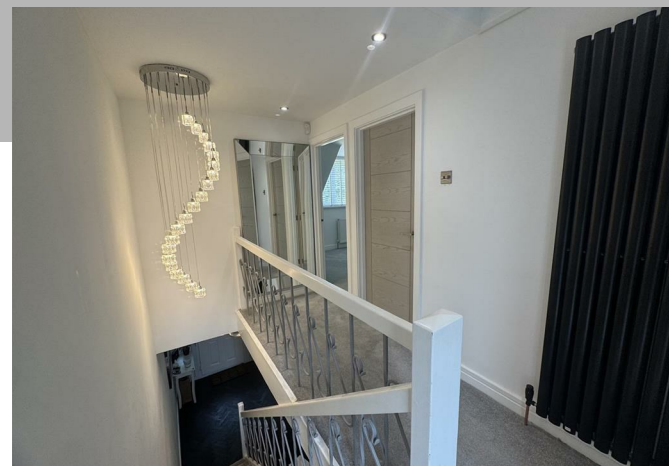
The substantial size of the property allows for a variety of living arrangements, catering to both large families and those who appreciate extra space. Each of the five bedrooms is thoughtfully designed, offering a peaceful retreat at the end of the day.

Located on Pilgrims Way, this property benefits from the tranquillity of village life while remaining conveniently close to local amenities and transport links. This delightful home is not just a place to live; it is a sanctuary where comfort meets style. Do not miss the opportunity to make this exceptional property your own.














Energy Efficiency Rating		
	Current	Potential
Very energy efficient - lower running costs		
(92 plus) <b>A</b>		
(81-91) <b>B</b>		
(69-80) <b>C</b>		
(55-68) <b>D</b>		
(39-54) <b>E</b>		
(21-38) <b>F</b>		
(1-20) <b>G</b>		
Not energy efficient - higher running costs		
England & Wales		EU Directive 2002/91/EC 

The Estate Office, Roundoak, Heniker Lane, Sutton Valence, Kent, ME17 3ED  
01622 763322  
enquiries@thecolesgroup.co.uk

**COLES**  
TOWN & COUNTRY  
  
VALUERS • LETTINGS & ESTATE AGENTS



## Location Map

